

SEK-18 SV FE TYPA ZGL 16P PL2 BULK

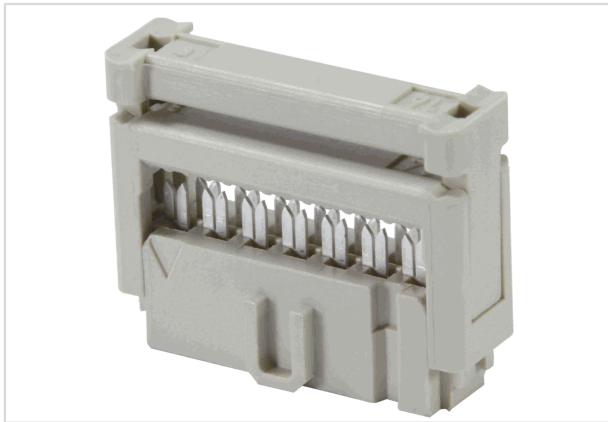


Image is for illustration purposes only. Please refer to product description.

| | |
|--------------------|---|
| Part number | 09 18 516 6813 58U |
| Specification | SEK-18 SV FE TYPA ZGL 16P PL2 BULK |
| HARTING eCatalogue | https://b2b.harting.com/0918516681358U |

Identification

| | |
|----------|------------------|
| Category | Connectors |
| Series | SEK |
| Element | Female connector |

Version

| | |
|--------------------|--|
| Connection type | PCB to cable |
| Number of contacts | 16 |
| Strain relief | With strain relief clamp |
| Details | for IDC flat cable 1.27 mm (0.050") pitch AWG 28/7 - AWG 26/7 |
| Pack contents | 2500 pieces |

Technical characteristics

| | |
|------------------------------------|---------------------------|
| Contact rows | 2 |
| Contact spacing (termination side) | 2.54 mm |
| Contact spacing (mating side) | 1.27 mm |
| Rated current | 2.5 A |
| Insulation resistance | $>10^9 \Omega$ |
| Contact resistance | $\leq 20 \text{ m}\Omega$ |
| Limiting temperature | -55 ... +125 °C |
| Insertion and withdrawal force | $\leq 32 \text{ N}$ |
| Performance level | 2 acc. to IEC 60603-13 |
| Mating cycles | ≥ 250 |



Pushing Performance
Since 1945

Technical characteristics

| | |
|---------------------------|-------------------------------|
| Test voltage $U_{r,m.s.}$ | 1 kV |
| Isolation group | IIIa ($175 \leq CTI < 400$) |

Material properties

| | |
|---|---|
| Material (insert) | Thermoplastic resin (PBT) |
| Colour (insert) | Grey |
| Material (contacts) | Copper alloy |
| Surface (contacts) | Au over Ni Mating side Sn over Ni Termination side |
| Material flammability class acc. to UL 94 | V-0 |
| RoHS | compliant |
| ELV status | compliant |
| China RoHS | e |
| REACH Annex XVII substances | Not contained |
| REACH ANNEX XIV substances | Not contained |
| REACH SVHC substances | Not contained |
| California Proposition 65 substances | Yes |
| California Proposition 65 substances | Antimony trioxide Nickel |
| Requirement set with Hazard Levels | R26 |

Specifications and approvals

| | |
|------------------------|--|
| Specifications | IEC 60603-13 |
| UL / CSA | UL 1977 ECBT2.E102079 CSA-C22.2 No. 182.3 ECBT8.E102079 |
| Railway classification | F3/I3 |

Commercial data

| | |
|--------------------------------|---|
| Packaging size | 2,500 |
| Net weight | 2.88 g |
| Country of origin | Romania |
| European customs tariff number | 85366990 |
| GTIN | 5713140028920 |
| eCl@ss | 27460202 PCB connector (conductor connection) |



Pushing Performance
Since 1945

Current carrying capacity

The current carrying capacity of the connectors is limited by the thermal load capability of the contact element material including the connections and the insulating parts. The derating curve is therefore valid for currents which flow constantly (non-intermittent) through each contact element of the connector evenly, without exceeding the allowed maximum temperature.

Measuring and testing techniques acc. to IEC 60512-5-2



- ① Temperature raise
- ② Derating curve
- ③ Derating curve 80%